



Wordfast

“The most powerful tool for translators using Microsoft Word.”

– ITI Bulletin

Wordfast Classic – Translation Memory has never been this fast.

Built by Translators for Translators

Wordfast is designed to meet the specific needs of individual translators, language service providers, and corporations. Its lightweight, flexible structure makes it easy to install and use, and contains features to handle jobs of any size and complexity. Wordfast is a highly customizable program, and offers unique features such as quality checks and links to unlimited external resources. Its small size allows for easy downloads, and at a fraction of the price of most competing CAT programs, Wordfast is the perfect tool to fit the freelancer's budget.

Feature Rich

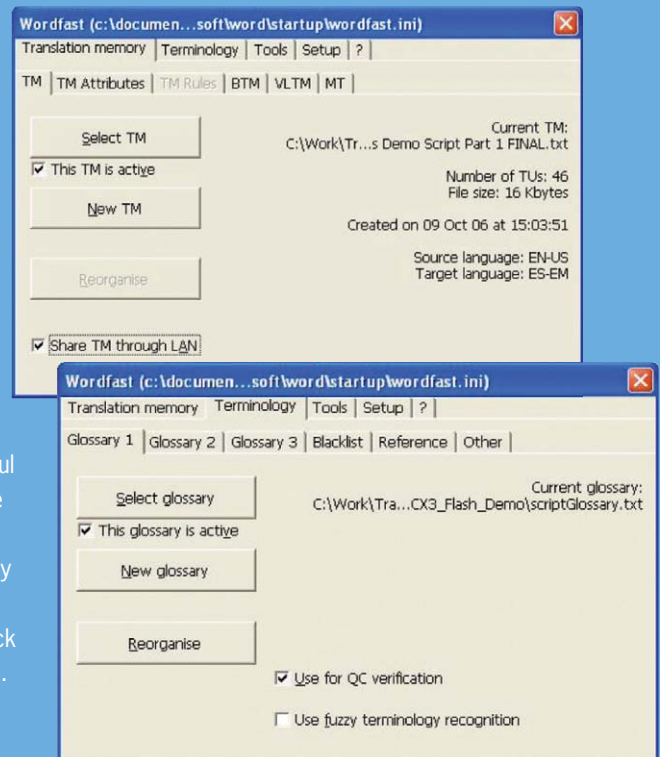
Wordfast's power is packed into a single, compact Microsoft Word™ template, and runs on Windows and Macintosh operating systems (Linux is supported through Windows emulators) without requiring other applications or extensions. Wordfast creates TM data files that are easy to read, maintain, share, and store, enabling instant access from nearly any text editor. Wordfast's TMs are compatible with Trados and most commercial CAT tools thanks to its industry-standard segmentation method, TMX 1.4b support, and support for tagged content.

Easy to Use

Unlike other bulky TM engines, Wordfast's low-impact design combines powerful data management with superior versatility, whether translating Microsoft Office documents natively or using the PlusTools™ freeware package for HTML and other tagged formats. Wordfast's glossary features provide reliable terminology re-use without having to purchase a separate terminology add-on tool. To streamline editing during and post-translation, Wordfast's thorough quality check provides on-demand reports pertaining to the most common translation issues.

Compatibility and Versatility

Wordfast is compatible with any translation tool that supports TMX. This allows for seamless integration with translation agencies and direct customer workflows, providing the added benefits of Wordfast's superior TM functionality, terminology handling, and quality-check features without lengthy deployment times or learning curves.



Visit us online at www.wordfast.com, where you can obtain more information, download a demo version, or purchase your own Wordfast license.

Worldwide Technical Support

Just say "NO" to excessive support contracts. Consult with and contribute to the community-supported knowledge base at www.wordfast.com. Or join the growing Wordfast community and draw on the knowledge and experience of your peers by participating in active Wordfast forums available in a dozen languages.

Why Use Wordfast?

• Cross-Platform Support:

Unlike other translation tools, Wordfast has the capability to run on multiple platforms, including Windows, Mac OS, and Linux.

• Microsoft Office Interface:

Intuitive interface decreases the learning curve. Most new Wordfast users are able to comprehend its functionality in a matter of only a few hours. Additionally, support for other Microsoft Office applications eliminates the need for filters to support formats like Excel or PowerPoint.

• Integration Points for External Resources:

By seamlessly linking to external resources such as Translation Memories, glossaries, preferred dictionaries, or machine translation engines, translators are able to increase their productivity and reduce errors.

• User-Defined Macros:

Wordfast makes it easy to customize its features to suit your unique needs. Scale Wordfast's quality-check functionality to repair typographical errors, preferred term omissions, or define your own quality assurance routines.

• Peer-to-Peer Connectivity:

Increase team productivity by linking in remote translation teams. Internet-based TM sharing allows multiple translators to work together simultaneously.

• Price:

Despite all of the benefits of Wordfast and its compatibility with other CAT tools, it is actually less than half the cost of competing tools in the marketplace. Wordfast is the right solution to meet your evolving needs and fit your budget.

Glossaries

- Supports up to 250,000 entries per glossary
- Open, plain text, tab-delimited format for easy maintenance or migration

Supported Languages

- Any language supported by Microsoft Word

Risk Free Trial

Wordfast offers a try-before-you-buy program available for download on www.wordfast.com. The free download includes a translation memory of up to 500 units, making it possible to use Wordfast on small to medium jobs, without any limitation of time. Install Wordfast and run it instantly to see if Wordfast is the right solution for you.

Emerging Usage Amongst Translation Professionals

According to a recent survey on translation memory systems conducted by the Imperial College of London, Wordfast's easy-to-use features make it the preferred translation memory tool among users. Wordfast's cross-platform compatibility makes it the preferred TM software among non-Windows users. The survey also revealed that when rated in terms of learnability, usability, and overall value, Wordfast left its competition in the dust. "I came across Wordfast in January 2001, and this program immediately became my favorite tool. I had extensive experience with Deja Vu and TRADOS Workbench 2.0. Now I use Wordfast every day, and it boosts my productivity even when there are no repetitions in the source text." – ATA Member

Technical Specification

- Windows 95 and higher – Microsoft Word 97 and higher
- Mac OS 7 and higher (including OS X) – Microsoft Word 98 and higher (excluding Word 2008)
- Linux (tested on SUSE and Mandrake Linux with XFCE, KDE2, VMWare and CrossOver) – Microsoft Word 97 and higher

Translation Memory

- Supports up to 1,000,000 translation units per TM
- Supports up to TMX 1.4b
- Average retrieval speed of less than half a second per segment for large TMs
- Supports up to 20 simultaneous users of the same TM over a LAN
- Fully backward-compatible with previous Wordfast versions
- Intuitive alignment feature through the PlusTools utility

Save Money • Save Time • Save Memory